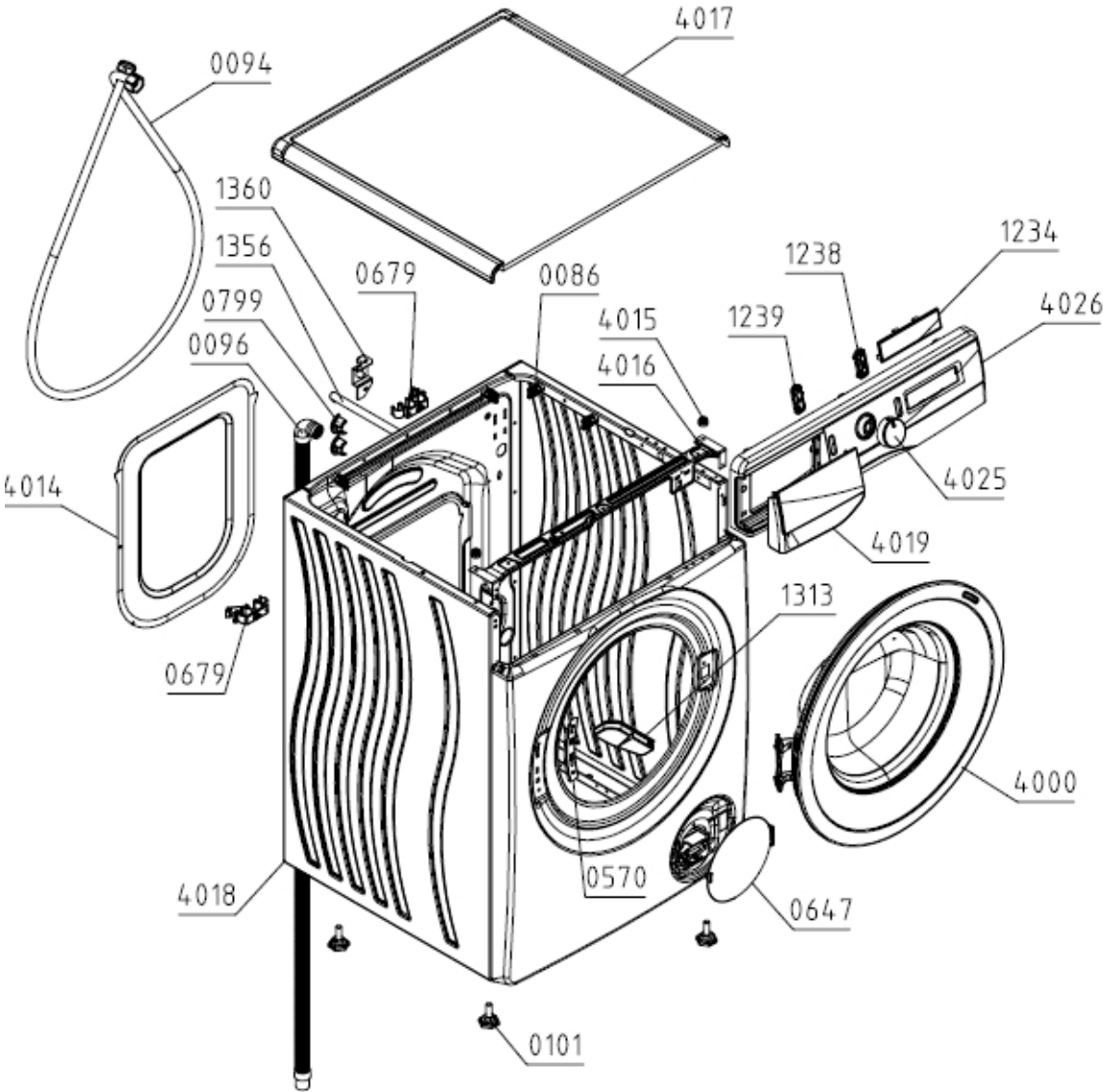


Type (Modèle Usine) PS22/18140
Modèle WFGP10143VMB
ID Produit / ART. No 739887

Marque HISENSE
Version 06.09.2021
N° d'Index 01

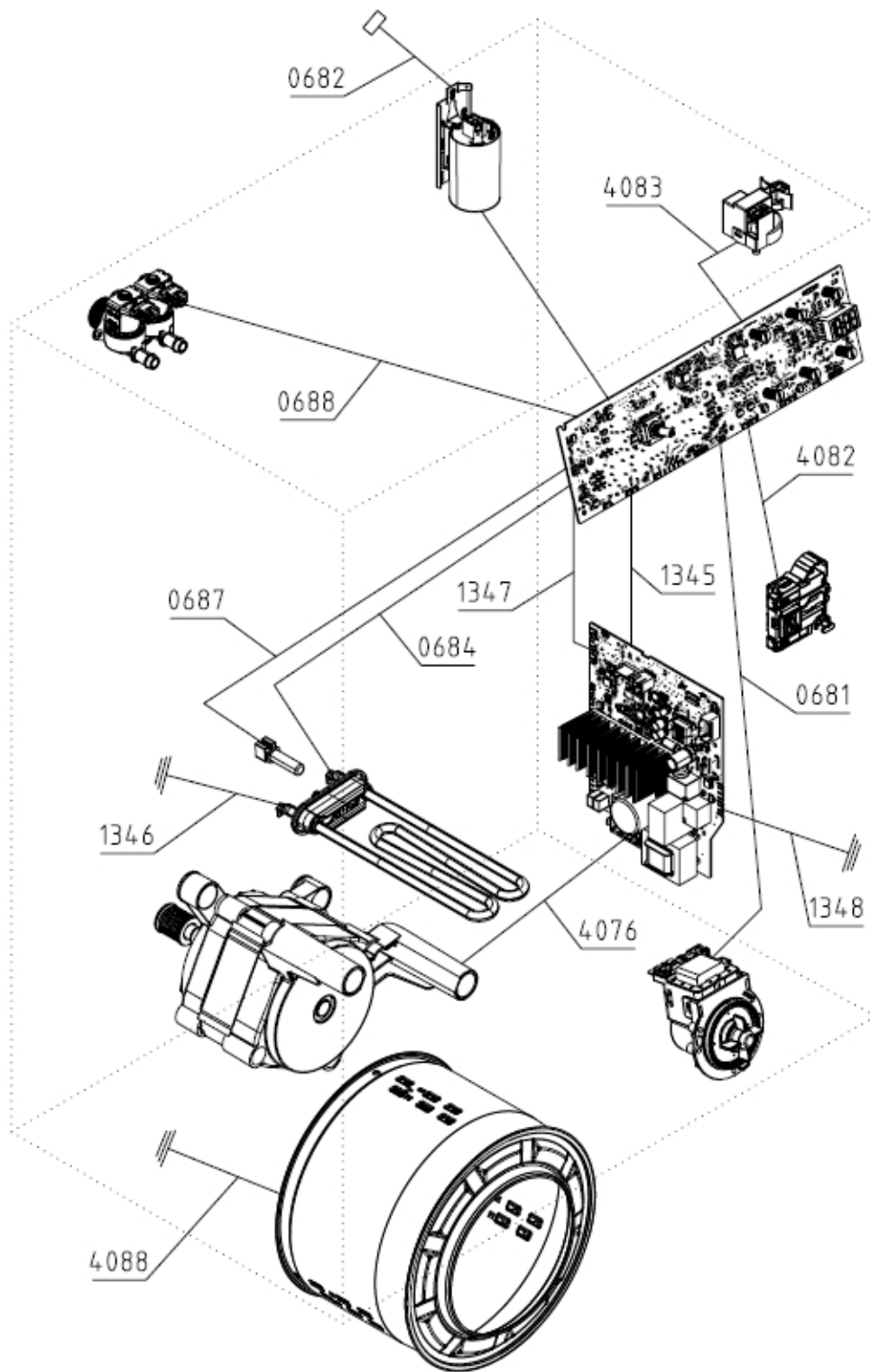
021447



Position	Identifiant	Désignation	Quantité	Validité	Référence Pièce
0086	547104	CLAMP PS	10		G547104
0094	157474	SUPPLY HOSE HV PS	1		G157474
0096	699606	DISCHARGE HOSE NK PS-15	1		G699606

Position	Identifiant	Désignation	Quantité	Validité	Référence Pièce
0101	816544	ADJUSTABLE FOOT PS-10 KPL	4		G816544
0570	466627	HINGE PLATE PS-15	1		G466627
0647	720870	FILTER COVER 9005 PS-15 KPL	1		G720870
0679	823979	HOSE HOLDER PS-20	2		G823979
0799	148999	RUBBER SEAL PS-03	1		G148999
1234	846693	DISPLAY PLATE B1 PS-22	1		G846693
1238	865897	PAUSE KEY PS/SP-22 9005	1		G865897
1239	865896	SWITCH ON KEY PS/SP-22 9005	1		G865896
1313	829842	PROTECTION PMCU PS-20	1		G829842
1356	466625	BLOCKING ROD 600 PS-15	2		G466625
1360	587350	TRANSPORT RODS SUPORT	2		G587350
4000	863875	DOOR PS-15 ČR KPL	1		G863875
4014	466535	REAR WALL COVER PS-15 F	1		G466535
4015	578966	WORKTOP PLUG PS-15 ASSY	2		G578966
4016	808503	CONTROL PANEL HOLDER PS-15 MOLLIS	1		G808503
4017	720868	WORKTOP 60 ČR PS/SP-15 KPL	1		G720868
4018	873932	HOUSING 60/10-1600 PS-15 LA9005-S	1		G873932
4019	866107	SOAP DISPENSER HANDLE PS-22 HSN SIG	1		G866107
4025	863443	CONTROL KNOB 9005 PS/SP-22 KPL	1		G863443
4026	866060	FRONT PANEL ČR B1 PS-22 FR/NS HSN SIG	1		G866060

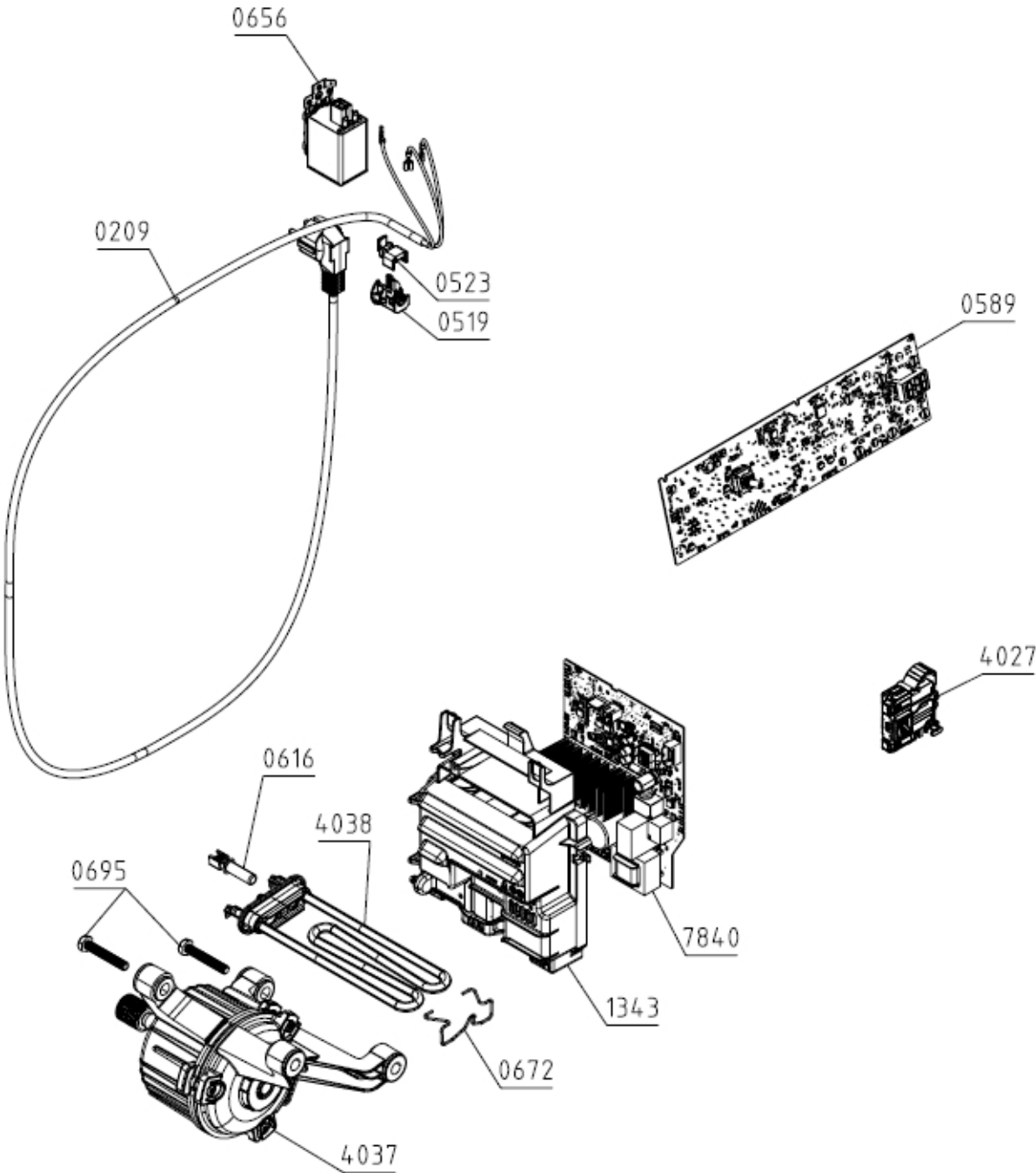
023457



Position	Identifiant	Désignation	Quantité	Validité	Référence Pièce
0681	845752	WIRING HARNESS PUMP 60/EN PS-22	1		G845752
0682	845675	WIRING HARNESS SUPPLY 60/EN PS-22	1		G845675
0684	845690	WIRING HARNESS HEATER 60/EN PS-22	1		G845690
0687	845737	WIRING HARNESS - NTC 60/EN PS-22	1		G845737
0688	845688	WIRING HARNESS VALVE 60/EN PS-22	1		G845688
1345	845697	WIRING HARNESS SUPPLY MCU 9 60/EN PS-22	1		G845697

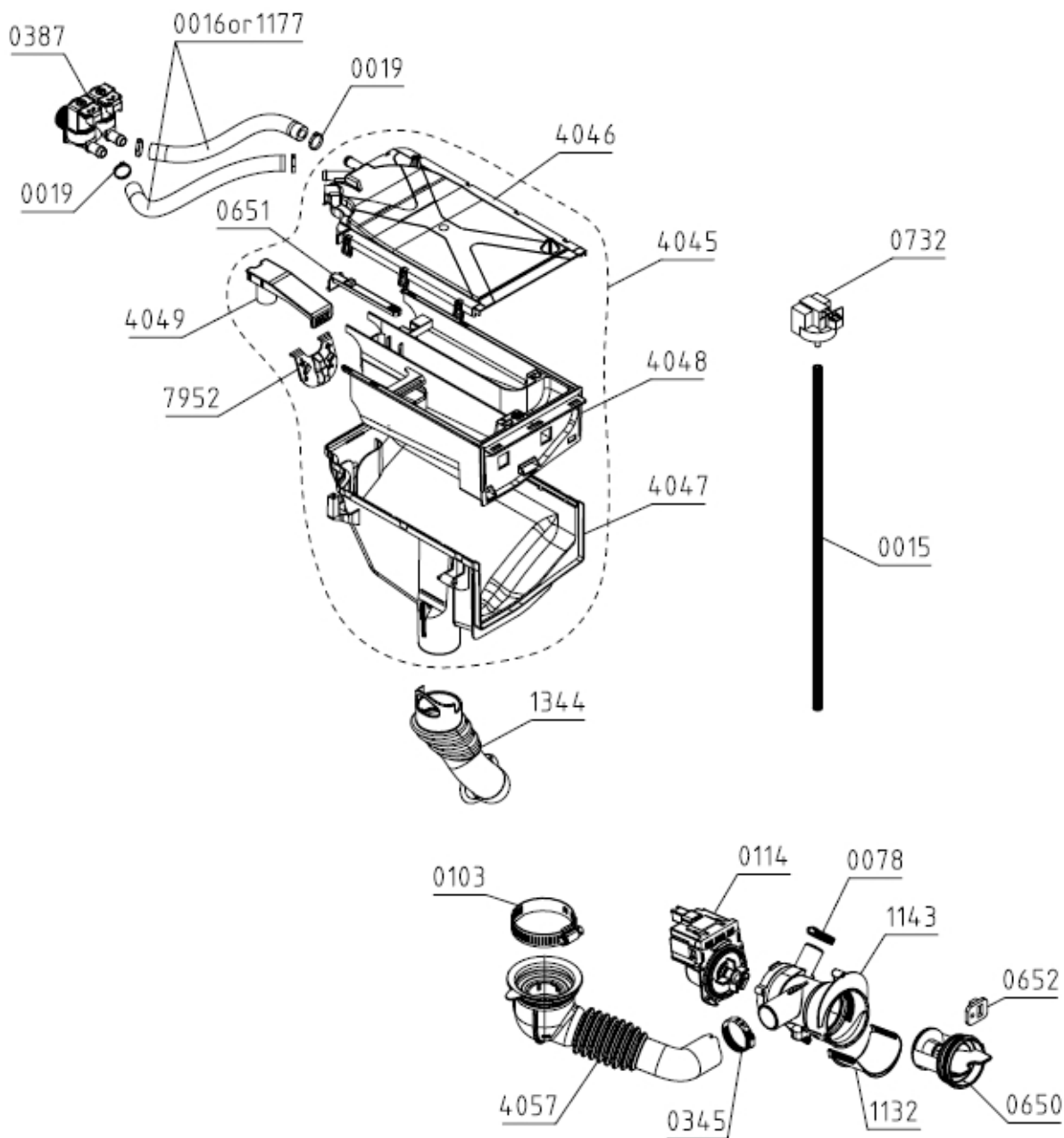
Position	Identifiant	Désignation	Quantité	Validité	Référence Pièce
1346	845636	WIRING HARNESS EARTHING HEATER PS-22	1		G845636
1347	845724	WIRING HARNESS COMMUN.MCU 9 60/EN PS-22	1		G845724
1348	846301	EARTHING MCU-9 PS-22	1		G846301
4076	845613	WIRING HARNESS MOTOR EN PS-22	1		G845613
4082	845604	WIRING HARNESS DOOR SWITCH EN PS-22	1		G845604
4083	845603	WIRING HARNESS SENSOR LEVEL EN PS-22	1		G845603
4088	466643	GROUNDING DRUM BM PS-15	1		G466643

023458



Position	Identifiant	Désignation	Quantité	Validité	Référence Pièce
0209	132222	CABLE WITH PLUG H05VV-F3G1.0 1550	1		G132222
0519	667400	RUBBER SEAL	1		G667400
0523	667401	CLIP FOR INITIATION SLEEVE	1		G667401
0589	860636	CONTROL UNIT PS-22/60-A-14-10-NS-E	1		G860636
0616	658696	TEMPERATURE SENSOR	1		G658696
0656	431466	RFI-FILTER 1,5MH H.A.L.	1		G431466
0672	194555	HEATER CLAMP PS-03 CA	1		G194555
0695	587311	SCREW PT80X50 EJOT A2K	2		G587311
1343	846697	CONTROL UNIT HOLDER MCU PS-22	1		G846697
4027	579333	DOOR LOCK PS-15	1		G579333
4037	816211	ELECTROMOTOR BPM 54/60 KINGCLEAN	1		G816211
4038	602720	TUB.HEATER 230V/1700W	1		G602720
7840	843135	SUPPLY UNIT BM-9.33 PS-22 KING3	1		G843135

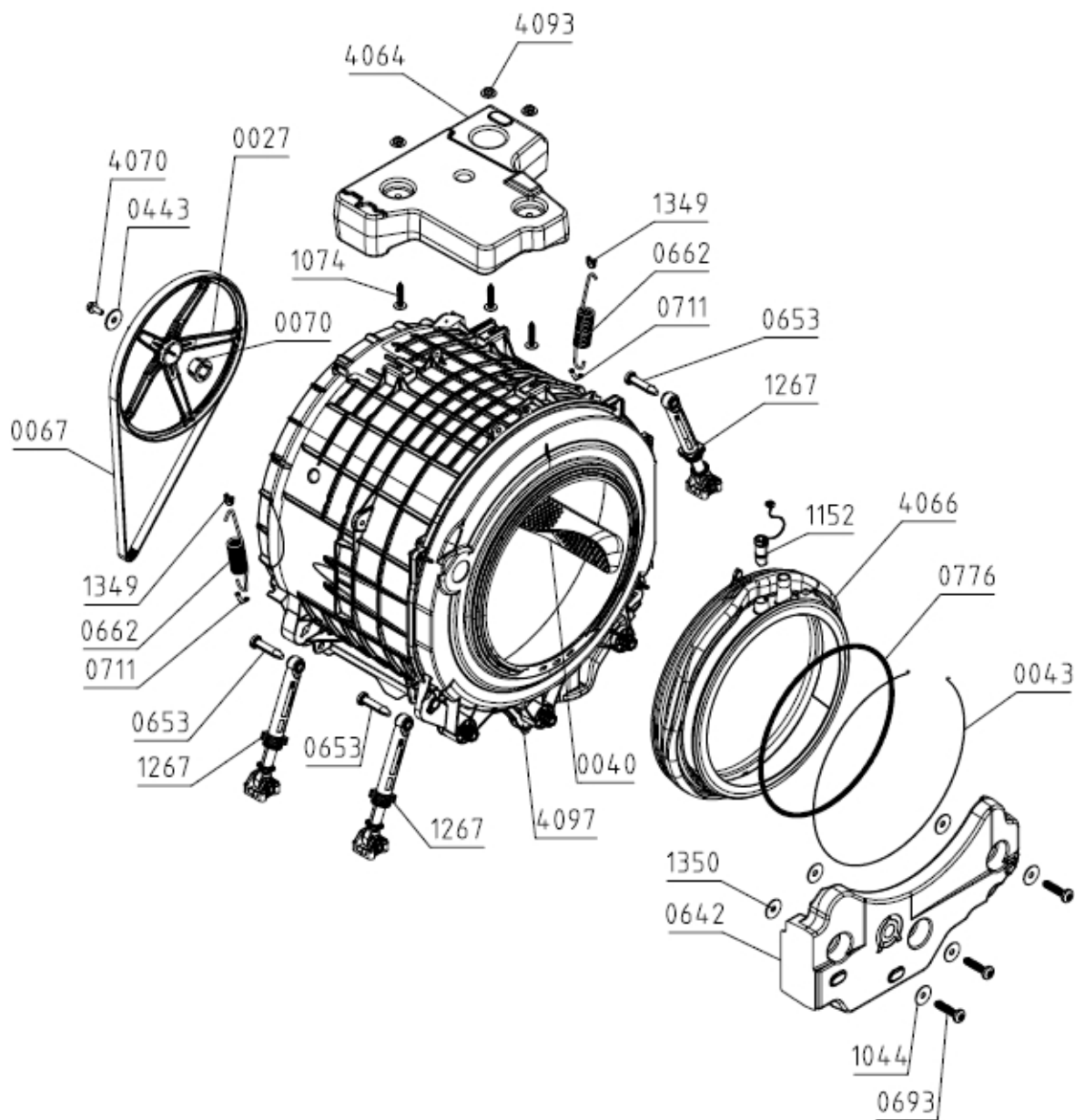
024424



Position	Identifiant	Désignation	Quantité	Validité	Référence Pièce
0015	468045	HYDROSTAT HOSE PS-03 L570	1		G468045
0019	314400	CLAMP - PLASTIC D 16	4		G314400
0078	349484	CLAMP - WIRE D 28	1		G349484
0103	548401	CLAMP - WIRE PS D 65	1		G548401
0114	665323	DISCHARGING PUMP T2107 AL ASKOLL	1		G665323
0345	537874	CLAMP - WIRE D 38	1		G537874
0387	789799	ELECTRO VALVE DOUBLE MT ELBI	1		G789799
0650	716300	FILTER INSERTION E PS-15	1		G716300
0651	579171	SNAP PIN PS-15	1		G579171
0652	587438	FILTER SHOCK ABSORBER	1		G587438
0732	797414	WATER LEVEL SENSOR ST-545 NS METALFLEX	1		G797414

Position	Identifiant	Désignation	Quantité	Validité	Référence Pièce
1132	333909	DISCHARGE CHANNEL PS-10	1		G333909
1143	333903	FILTER BOX PS-10	1		G333903
1177	309930	HOSE PS D15X260	2		G309930
1344	838776	DETERGENT HOSE PS-20	1		G838776
4045	865319	SOAP DISPENSER BOL PS-15 KPL	1		G865319
4046	466586	SOAP DISPENSER LID PS-15 ASSY.	1		G466586
4047	865317	SOAP DISPENSER HOUSING BOL PS-15	1		G865317
4048	579190	SOAP DISPENSER DRAWER PS-15	1		G579190
4049	672929	SOFTENER INSERT PS-15	1		G672929
4057	590300	HOSE TUB-FILTER PS-15 KPL	1		G590300
7952	466608	LIQUID DETERGENT INSERT PS-15	1		G466608

025409



Position	Identifiant	Désignation	Quantité	Validité	Référence Pièce
0027	339066	BELT PULLEY PS-10	1		G339066
0040	664610	DRUM RIB WITH SHOWER 60 PS-15	3		G664610
0043	853975	WIRE CLIP D350 KPL	1		G853975
0067	111622	BELT POLY-V 6EPJ 1260 OPTIBELT	1		G111622
0070	587405	PULLEY SLEEVE 1200 PS-03	1		G587405
0443	234660	WASHER 10,5X36X3	1		G234660
0642	686252	FRONT WEIGHT PS-15	1		G686252
0653	587313	TUB SHOCK ABSORBER PIN PS-03 000	3		G587313
0662	705600	TUB SPRING 60 PS-15	2		G705600
0693	587309	SCREW PT100X50-WN5452-50IP-EJOT-A2K-TORX	3		G587309
0711	587346	SUPPORT SPRING INSERT PS-03 040	2		G587346
0776	122062	SPRING CLAMP PS-03	1		G122062

Position	Identifiant	Désignation	Quantité	Validité	Référence Pièce
1044	819493	WASHER D34/D10,5	3		G819493
1074	290070	SCREW	3		G290070
1267	473322	TUB SHOCK ABSORBER ASSY 60/10 PS-15	3		G473322
1349	857749	SUPPORTING SPRING INSERT-CABINET PS-21	2		G857749
1350	820573	WASHER 45X28X1,5-A2F	3		G820573
4064	465723	WEIGHT - UPPER 1400 PS-15	1		G465723
4066	576360	DOOR SEAL PS-15	1		G576360
4070	621649	SCREW M10X20-10.9-BR	1		G621649
4093	548358	NUT KPL	3		G548358
4097	871986	TUB W DRUM CA 60/10-1600 UL PS-15/22-S	1		G871986